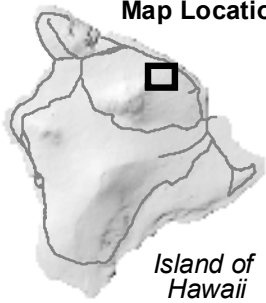
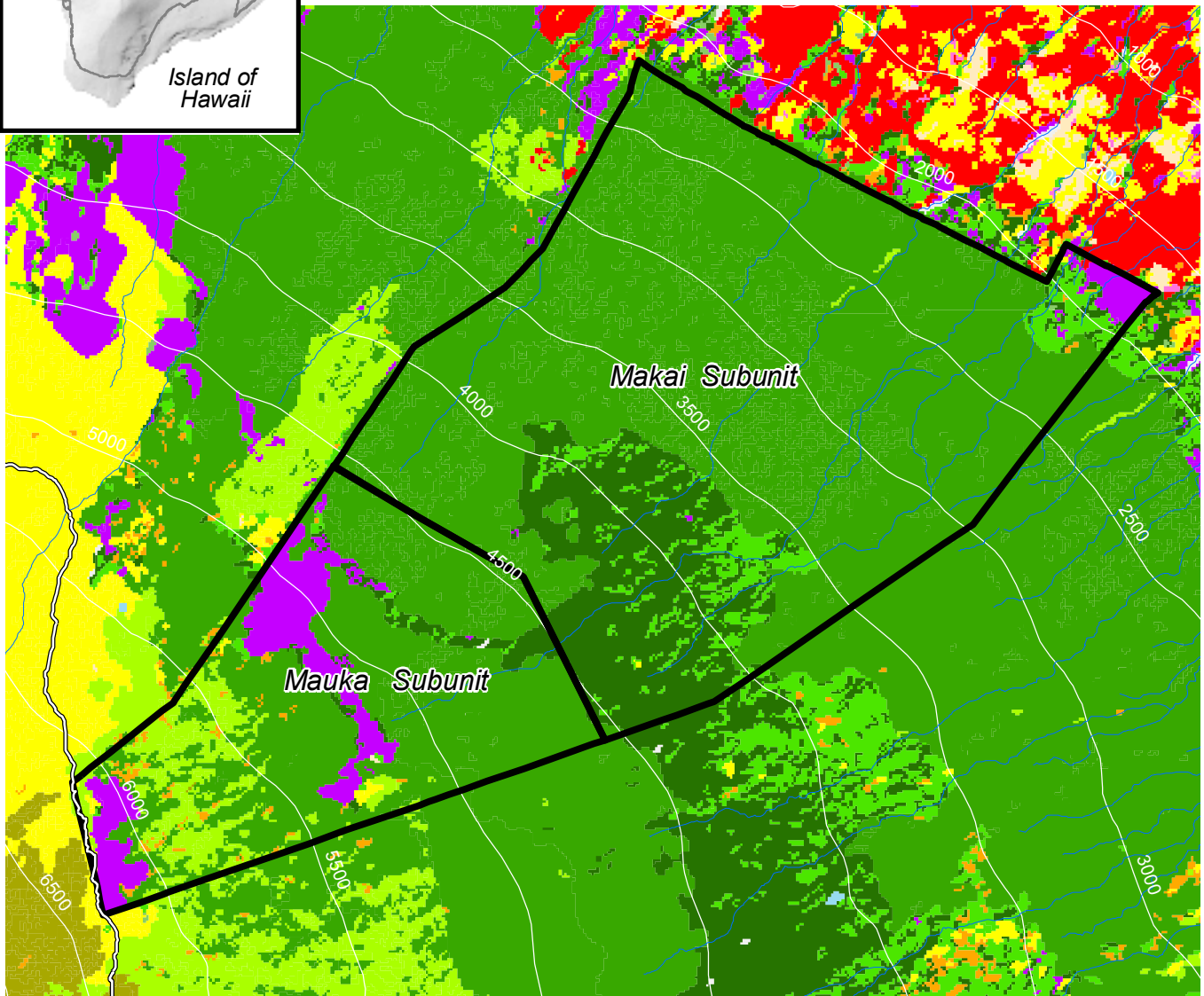


Map Location



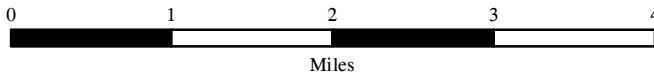
Island of Hawaii





MAP 4. Laupahoehoe Wet Forest : Vegetation



Legend

-  Closed Ohia Forest
-  Open Ohia Forest
-  Closed Koa-Ohia Forest
-  Open Koa-Ohia Forest
-  Alien Forest
-  Native Shrubland
-  Alien Grassland
-  Uncharacterized Open-Sparse Vegetation
-  Very Sparse Vegetation to Unvegetated
-  Developed land



-  HETF Boundary
-  Secondary Road
-  500-Foot Contour
-  Stream



State of Hawaii
 Department of Land and Natural Resources
 Division of Forestry and Wildlife
 Map No. FW - 0672 (08/2006)
 Contact: Ronald Cannarella
 Telephone: (808) 383-3077
 Email: Ronald.J.Cannarella@hawaii.gov

Data Source : Hawaii Heritage Program GAP Landcover, State of Hawaii GIS.