



File Code: 1560

Date: August 23, 2016

Aloha:

I am writing to welcome and invite your participation in a another opportunity to comment on the proposed the Institute of Pacific Islands Forestry's research and education field facility within the Pu'u Wa'awa'a Unit of the Hawai'i Experimental Tropical Forest (HETF) (see Figure 1). For more information about the HETF, including annual reports containing research discoveries and youth engagement, please visit the following Internet URL:

<http://www.fs.fed.us/psw/ef/hawaii/>.

The HETF has prepared a draft environmental assessment for The Pu'u Wa'awa'a Construction Project. This project would develop research and education facilities on land leased from the Hawaii Department of Land and Natural Resources, Division of Forestry and Wildlife, on the Pu'u Wa'awa'a Forest Reserve (a portion of TMK (3) 7-1-001:006). The site is located approximately 1.5 miles south southwest of the Pu'u'anahulu Homesteads neighborhood and approximately 1.5 miles north northwest of the Pu'u Wa'awa'a volcanic cinder cone in North Kona (see Figure 2). Facilities would include a bunkhouse for 10 visiting students or researchers, a sanitary building with vault toilets and shower, an education pavilion, camping space for up to 15 visiting students, and ten parking spaces.

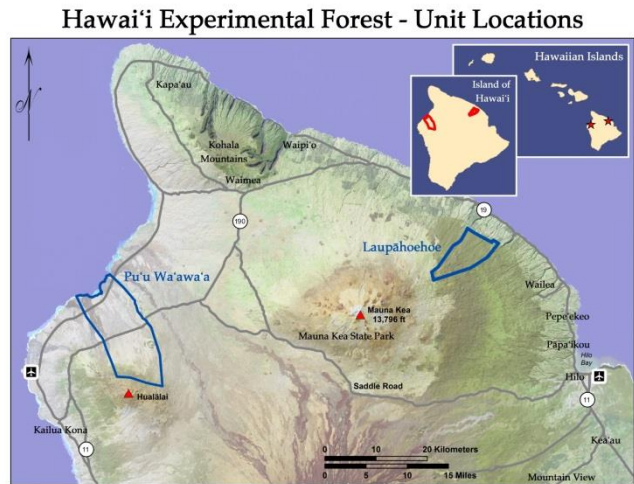


Figure 1

The draft environmental assessment is available for review on-line at:

http://oeqc.doh.hawaii.gov/Shared%20Documents/Environmental_Note/2016-08-23.pdf. The notice and supporting documentation is also available for review at the Institute of Pacific Islands Forestry, 60 Nowelo Street, Hilo, HI 96720. Additional information regarding this action can be obtained from: John Slown, Biologist/Planner, USDA Forest Service, Enterprise Technical Services, 406-329-3749; email jslown@fs.fed.us.

The proposed project is subject to 36 CFR 218 Subparts A and B.

How to Comment and Timeframe

Specific written comments (defined in 36 CFR 218.2) on the proposed project will be accepted for 30 calendar days following publication of this legal notice in the *Hawaii Herald Tribune*. The publication date in the newspaper of record is the exclusive means for calculating the comment period. The regulations prohibit extending the length of the comment period (36 CFR 218.25).



Written comments must be submitted via mail, fax, or in person (Monday through Friday, 8:00 a.m. to 4:30 p.m., excluding holidays) to: Ricardo Lopez, Director, Institute of Pacific Islands Forestry, 60 Nowelo Street, Hilo, HI 96720; fax (855) 456-0352. Electronic comments including attachments can be submitted to rdlopez@fs.fed.us; please include the words: "Pu'u wa'awa'a Construction Project" in the subject line.

It is the responsibility of persons providing comments to submit them by the close of the comment period. Only those who submit timely and specific written comments will have eligibility (36 CFR 218.5) to file an objection under 36 CFR 218.8. For objection eligibility, each individual or representative from each entity submitting timely and specific written comments must either sign the comment or verify identity upon request. Individuals and organizations wishing to be eligible to object must meet the information requirements in §218.25(a)(3). Names and contact information submitted with comments will become part of the public record and may be released under the Freedom of Information Act.

Thank you for your interest in the Institute of Pacific Islands Forestry.

Sincerely,

A handwritten signature in blue ink, appearing to read "Ric Lopez", with a long horizontal flourish extending to the right.

Ric Lopez
Director, Institute of Pacific Islands Forestry

Cc: Rommel Tanglao, John Slown

Hawai'i Experimental Tropical Forest Pu'u Wa'awa'a Proposed Project Site

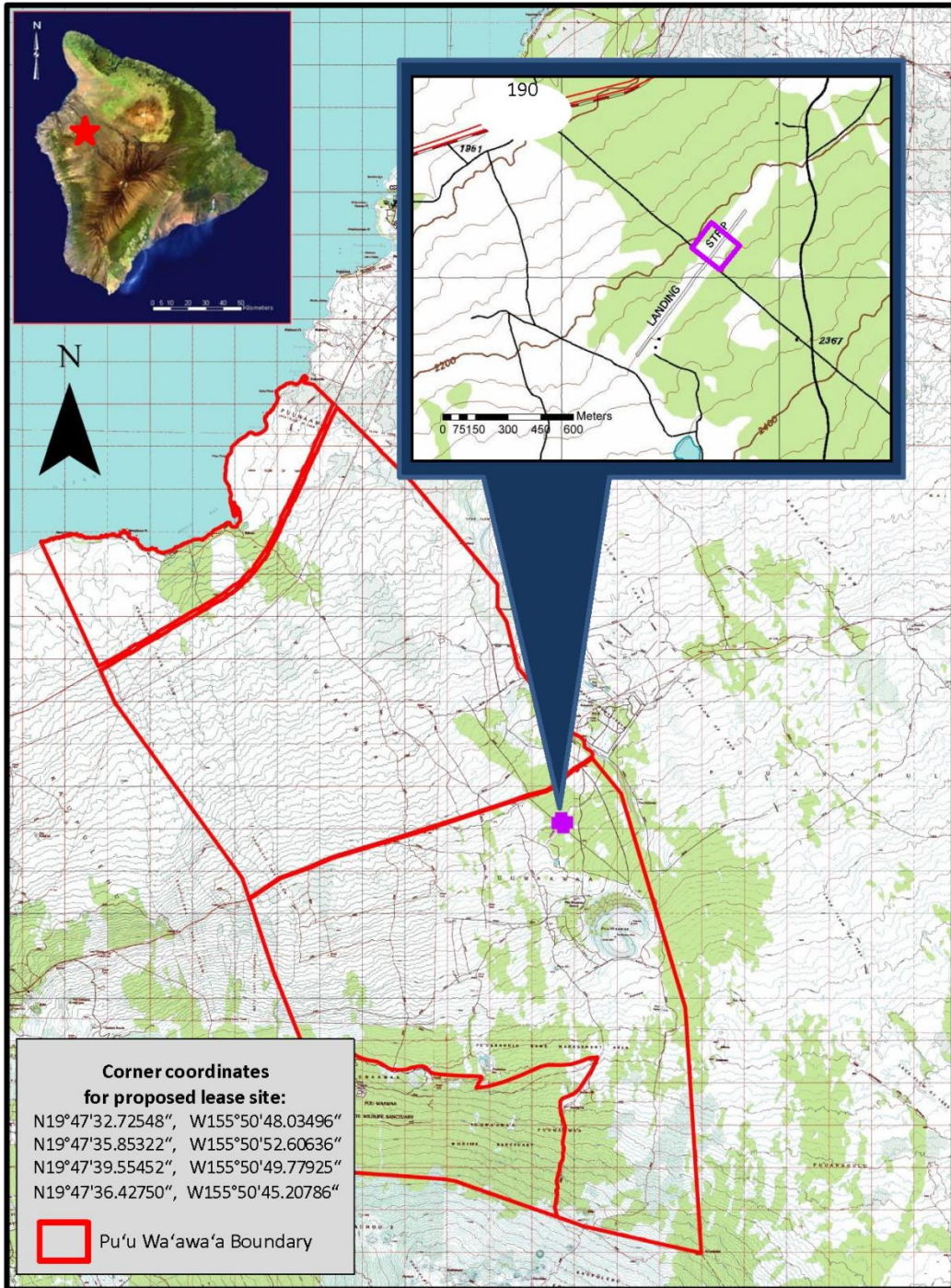


Figure 2

The Institute of Pacific Islands Forestry is a field unit located in Hilo, Hawaii and is a part of the United States Department of Agriculture Forest Service's Pacific Southwest Research Station. Additional information available at: <http://www.fs.fed.us/psw/programs/ipif/>.